



Sound Level Measuring Amplifier **NA-42**

Wide Range of Applications in High-Precision Sound Level Measurement



- Wide range of measurement frequencies and levels and support for a variety of microphones (for measuring low through to high sound levels)
- High-resolution display showing sound pressure levels up to 2 decimal places.
- The built-in comparator function makes it suitable for a wide range of applications, including measurement systems and monitoring systems
- Can be controlled using serial communication on up to 16 channels (using the SC-31 multi-channel adapter)

Measurement functions

- Sound pressure level L_p
- Sound level maximum L_{max}
- Peak sound pressure level L_{peak}

Frequency range

1 Hz - 100 kHz (approx -2 dB at 1 Hz, approx -3 dB at 100 kHz)

Frequency weighting A, C, FLAT

Linear operation range and applicable standards

Depending on microphone combination
(Linear operation range applies to A weighting without overload margin)

Designation	Linear Operation range	Frequency range	JIS	IEC60651
UC-53A	28~145 dB	10 Hz~ 20 kHz	C1505	TYPE1
UC-52	28~146 dB	20 Hz~ 8 kHz	C1502	TYPE2
UC-34P	10~112 dB	10 Hz~12.5 kHz	C1505	TYPE1
UC-29	50~164 dB	20 Hz~ 100 kHz	C1505	TYPE1
UC-27	20~145 dB	5 Hz~12.5 kHz	C1505	TYPE1
UC-31	34~155 dB	10 Hz~ 35 kHz	C1505	TYPE1

When wider linear operation range is required, microphone selection can extend upper or lower limit by about 1 - 5 dB *.

* Depends on microphone type.

Inherent noise

Input converted inherent noise

- A weighting: 1.5 μ V rms or less
- C weighting: 1.5 μ V rms or less
- Flat characteristics: 7 μ V rms or less
- Flat (HPF 20 Hz, LPF 20 kHz): 2.5 μ V rms or less

Linearity range 60 dB

Level range switching

Conditions		Level range (dB)							
Pre-amplifier gain 0 dB/20 dB	Microphone sensitivity (dB)	60	70	80	90	100	110	120	130
0 dB	-19.99~-10.00	60	70	80	90	100	110	120	130
	-29.99~-20.00	70	80	90	100	110	120	130	140
	-39.99~-30.00	80	90	100	110	120	130	140	150
	-49.99~-40.00	90	100	110	120	130	140	150	160
	-59.99~-50.00	100	110	120	130	140	150	160	170
20 dB*	-19.99~-10.00	40	50	60	70	80	90	100	—
	-29.99~-20.00	50	60	70	80	90	100	110	—

Underlined settings are available only when the preamplifier power supply voltage is set to ± 45 V.

* The preamplifier gain setting of 20 dB is available only when the UC-34P (UC-34, NH-34) is connected.

Time weighting FAST, SLOW, IMPULSE

RMS detection By digital processing

Built-in filters

- High-pass filter (HPF): 3rd-order Butterworth filter, 20 Hz (-3 dB)
- Low-pass filter (LPF): 3rd-order Butterworth filter, 20 kHz (-3 dB)

Calibration

Electrical calibration using 1-kHz sine wave signal produced by internal oscillator
Insert CAL function possible with dedicated preamplifier

Microphone sensitivity -69.99 dB to -10.00 dB

Polarizing voltage (microphone bias voltage)

- 200 V: 200 V $\pm 0.5\%$ 20°C $\pm 3^\circ$ C
- 200 V $\pm 1\%$ Entire temperature range
- 60 V: 60 V $\pm 1.5\%$
- 30 V: 30 V $\pm 1.5\%$

Outputs

AC output

- BNC connector
- Output voltage: 1 Vrms (at full-scale of range)
- Output impedance: 600 Ω
- Load impedance: 10 k Ω or more

DC output

- BNC connector
- Output voltage: 6 V (at full-scale of range), 1 V/10 dB
- Output impedance: 50 Ω
- Load impedance: 10 k Ω or more

External filter input

- BNC connector
- Output impedance 600 Ω
- Input impedance 100 k Ω

Serial communication

For setting control from computer and data output
D-sub 9-pin connector
Multi-channel configuration using Multi-Channel Adapter SC-31M/SC-31S possible (up to 16 channels, maximum distance 400 m)

Comparator function

- Sound pressure level evaluating comparator
- Comparator output
 - Open-collector output using M3 screw strip
 - Maximum applied voltage: 24 V
 - Maximum drive current: 12.5 mA for applied voltage 24 V
 - 25 mA for applied voltage 12 V
 - 60 mA for applied voltage 5 V

LCD flashing

Comparator settings

- Comparator level 0 - 180 dB in 1-dB steps
- Delay time 0 - 9 s in 1-second steps
- Auto reset On/off selectable
- Auto reset time 0 - 90 s in 1-second steps

Display

- Backlit LCD
- Numeric readout 5 digits, display range 70 dB second decimal place or first decimal place, switchable
- Bar graph Scale range 50 dB or 20 dB, update interval 0.1 s

Power requirements

- IEC R14 (size "C") batteries $\times 4$ (R14P or LR14)
- Battery life LR14: approx. 14 hours
- R14P: approx. 6 hours

AC adapter

- UP01811065A AC outlet 90 V to 250 V, line frequency 50 to 60 Hz

Current consumption

- With EXT DC 6 V
- Approx. 220 mA
- With AC adapter UP01811065A
- AC outlet 100 V: approx. 55 mA
- AC outlet 220 V: approx. 45 mA

Ambient conditions for use

-10°C to 50°C, 10% to 90% relative humidity (no condensation)

Dimensions

171 (H) \times 120 (W) \times 236 (D) mm

Weight

1.8 kg (without batteries)

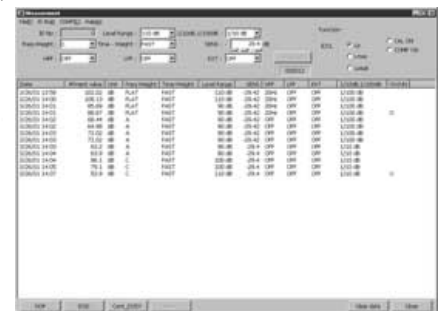
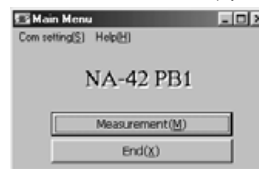
Supplied accessories

- IEC R14 (size "C") batteries R14P 4
- AC adapter UP01811065A 1
- Storage case VM-83-031 1

Optional accessories

- External input adapter UA-01
- Condenser microphones
- Preamplifiers
- Condenser microphone cable EC-04 series
- Pistonphone NC-72
- Sound calibrator NC-74
- Preamplifier (for vibration measurements) Vp-26C

Software NA-42PB1 (option)



Specifications subject to change without notice.



20-41, Higashimotomachi 3-chome, Kokubunji, Tokyo 185-8533, Japan
Telephone: +81-42-359-7888 Fax: +81-42-359-7442
URL: http://www.rion.co.jp/ E-mail: info@rion.co.jp

Distributed by: