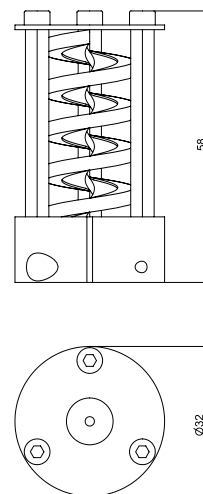


**Accessories  
for WS® Position Sensors**

**Cable dust wiper SAB5** The SAB5 cable dust wiper avoids the penetration of troublesome particles and media through the cable outlet by using a fiber brush. The sensor is protected against non abrasive particles and thin liquids. SAB5 is not useable with abrasive dust and thick liquids. With SAB5 the height of the cable outlet will be raised by 50 mm max. (for guaranteed dimensions consult factory).

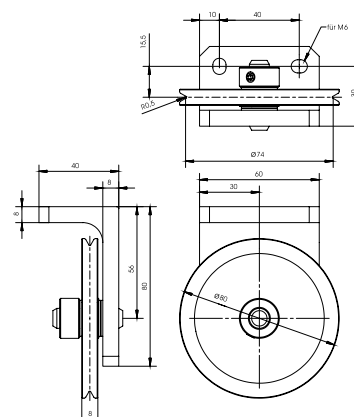
**NOTE:** SAB5 can be used with the following sensors: WS10, WS12, WS17KT (1500 to 6250 mm), WS19KT (2000 to 8000 mm) and WS60.



**Cable pulley SR2** The cable pulley SR2 is necessary for installation situations where straight-line motion of the sensor cable is not possible or where the sensor must be located outside of the motion area due to limited space. Turn Angle: 0 to 90°

Order Code: **SR2**

**NOTE:** The use of cable pulleys will reduce the lifecycle of the cable, so the use should be avoided whenever it is possible!

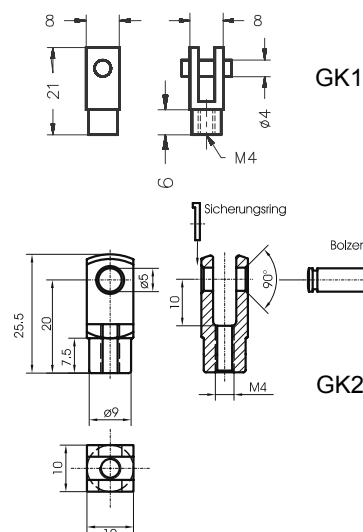


**Attachment head GK1/GK2** The cable attachment head GK1/GK2 can be used in many cases to attach the measurement cable to the moving object, and makes an easy to remove connection.

Order Code:

Metal version **GK1**

Plastic version (for isolated installation) **GK2**





**Magnetic clamp MAG1**

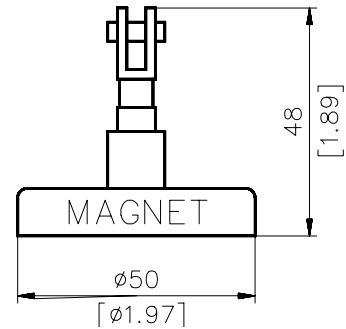
The magnetic clamp MAG1 is an easy way to fasten the measurement cable to ferromagnetic materials on the moving parts. The user can easily change from one application to another using this device.

Minimum Adhesive Force:  $\geq 200$  N (on bare steel)

**Note:** Coated surfaces will reduce the adhesive force.

Order Code:

**MAG1**



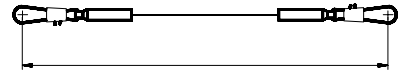
**Cable extension SV1**

Cable extension for ASM position sensors with cable clip

Order Code:

**SV1 - M**

Cable length in m (from 0.2 m)



**Float**

For best accuracy half the volume of the float has to be immersed in the fluid. The float should be filled with the same or a neutral liquid.

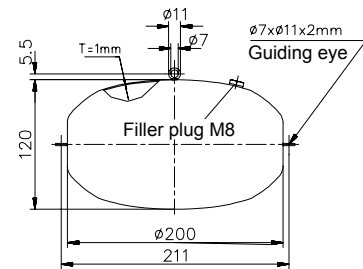
Weight: 1 kg approx.

Material: V4A Steel, DIN 1.4571

In running media the float can be stabilized by two guiding cables.

Order Code:

**SCHWIMMER-200MM**



**Accessories  
for WS® Position Sensors**



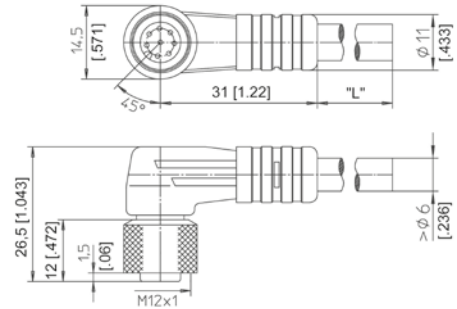
**Connector cable  
for WS® position  
sensors**  
8 pin M12

The 8-lead shielded cable is supplied with a mating 8-pin 90° M12 connector at one end and 8 wires at the other end. Available lengths are 2 m, 5 m and 10 m. Wire: cross sectional area 0.25 mm<sup>2</sup>.

Order code:

**KAB - XM - M12/8F/W - LITZE**  
**IP69K: KAB - XM - M12/8F/W/69K - LITZE**

Length in m



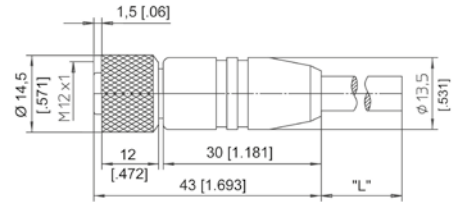
**Connector cable  
for WS® position  
sensors**  
8 pin M12

The 8-lead shielded cable is supplied with a mating 8-pin M12 connector at one end and 8 wires at the other end. Available lengths are 2 m, 5 m and 10 m. Wire: cross sectional area 0.25 mm<sup>2</sup>.

Order code:

**KAB - XM - M12/8F/G - LITZE**  
**IP69K: KAB - XM - M12/8F/G/69K - LITZE**

Length in m



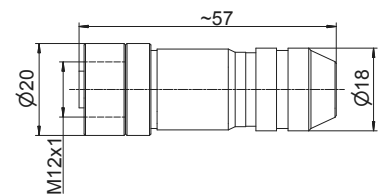
Connector cable wiring - M12, 8 pin	Connector pin / cable color							
	1	2	3	4	5	6	7	8
	White	Brown	Green	Yellow	Gray	Pink	Blue	Red

**Connector for WS®  
position sensors**  
8 pin M12

Female connector.

Order code:

**CONN - M12 - 8F - G**

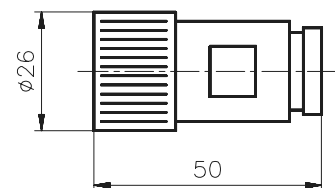


**Connector for WS®  
position sensors**  
12 pin CONIN

Female connector.

Order code:

**CONN - CONIN - 12F - G**

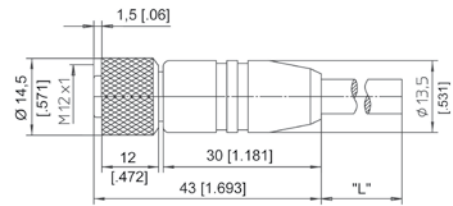




**Connector/bus cable  
for WS® position  
sensors**

5 pin M12  
CAN bus/DeviceNet

The 5-lead shielded cable is supplied with a female 5-pin M12 connector at one end and a male 5-pin M12 connector at the other end. Available lengths are 0.3, 2, 5 and 10 m.



Order code:

**KAB - XM - M12/5F/G - M12/5M/G - CAN**

**IP69K: KAB - XM - M12/5F/G/69K - M12/5M/G/69K - CAN**

Length in m

**T-piece for bus cable**

5 pin M12  
CAN bus/DeviceNet

Order code:

**KAB - TCONN - M12/5M - 2M12/5F - CAN**



**Terminating  
resistance**

5 pin M12  
CAN bus/DeviceNet

Order code:

**KAB - RTERM - M12/5M/G - CAN**

