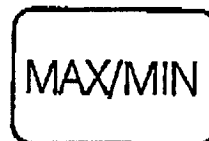
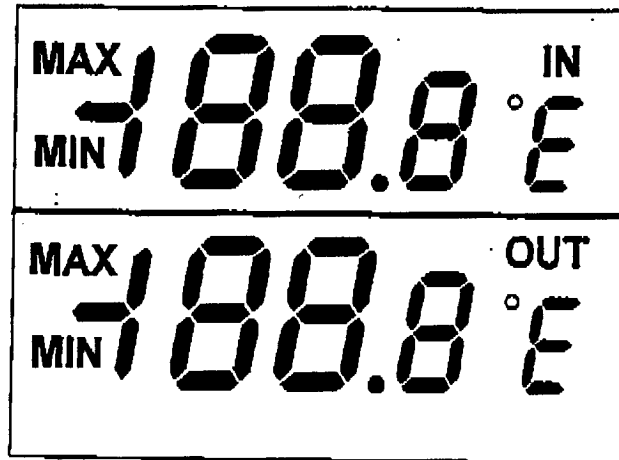


Dual Display (In/Out) Thermometer

SS0111



FEATURES

SS0111

1.5v Operate

Dual - Channel (IN/OUT) Temperature Measurement

Low Standby Current (typ. 2 μ A)

Operating Current (typ. 25 μ A)

Measuring Temperature Range : Indoor -20 ~ +70 degC

Outdoor -50 ~ +70 degC

Display Resolution : 0.1 degC

Accuracy : +/- 1 degC

degC /degF Switchable

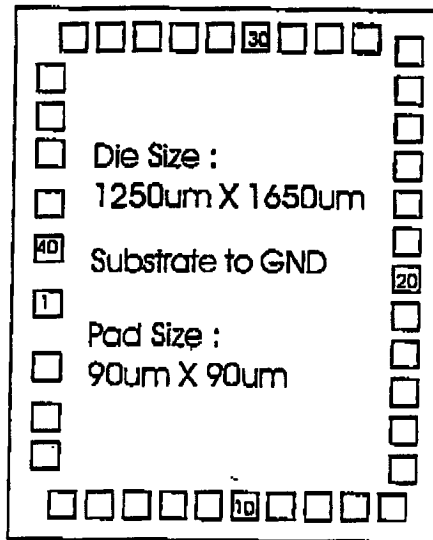
MAX/MIN Temperature records

PRESET ALERT

Key- Tone

Dual Display (In/Out) Thermometer

SS0111



PIN ASSIGMENT

NO	NAME	X	Y	NO	NAME	X	Y
1	XIN	72.5	712.85	21	SEG8	1176.85	919.5
2	XOUT	72.5	451.35	22	SEG9	1176.85	1041.5
3	GND	75	314.05	23	SEG10	1176.85	1163.5
4	VDD1	75	199.05	24	SEG11	1176.85	1285.5
5	VDD2	94.95	72.5	25	SEG12	1176.85	1407.5
6	VDD3	209.95	72.5	26	REF	1176.85	1534.2
7	CUP1	324.95	72.5	27	IN	1056.1	1571.3
8	CUP2	439.95	72.5	28	OUT	936.1	1571.3
9	COM1	554.95	72.5	29	SEG13	816.1	1571.3
10	COM2	669.95	72.5	30	SEG14	696.1	1571.3
11	COM3	784.95	72.5	31	SEG15	576.1	1571.3
12	N.C.	899.95	72.5	32	SEG16	456.1	1571.3
13	N.C.	1014.95	72.5	33	BZ	336.1	1571.3
14	SEG1	1129.95	72.5	34	SEG17	216.1	1571.3
15	SEG2	1176.85	187.5	35	MAX/MIN	96.1	1571.3
16	SEG3	1176.85	309.5	36	ALERT	72.5	1440.65
17	SEG4	1176.85	431.5	37	C/F	72.5	1325.65
18	SEG5	1176.85	553.5	38	RESET	72.5	1188.65
19	SEG6	1176.85	675.5	39	CAP	72.5	1029.85
20	SEG7	1176.85	797.5	40	TEST	72.5	871.65

Dual Display (In/Out) Thermometer

C/F
ADJ

HOLDING THE KEY

4.0C ^{IN}
24.0C ^{OUT}

ALERT
SET

4.0C ^{IN}
24.0C ^{OUT}

C/F
ADJ

HOLDING THE KEY

26.0C ^{IN}
24.0C ^{OUT}

ALERT
SET

Buzzer on 5 seconds and off 55 seconds when the Outdoor Temp. between (+24degC- +26degC.)

21.8C ^{IN}
24.0C ^{OUT}

ALERT
SET

HOLDING 1 SECOND FOR SETTING ALERT TEMPERATURE RANGE

26.0C ^{IN}
24.0C ^{OUT}

C/F
ADJ

HOLDING THE KEY

26.0C ^{IN}
28.0C ^{OUT}

ALERT
SET

ALERT
SET

Buzzer on 5 seconds and off 55 seconds when the Outdoor Temp. <26degC or >28degC

21.8C ^{IN}
24.0C ^{OUT}

ALERT
SET

TURN OFF ALERT

ALE
OFF

21.8C ^{IN}
24.0C ^{OUT}

ALERT
SET

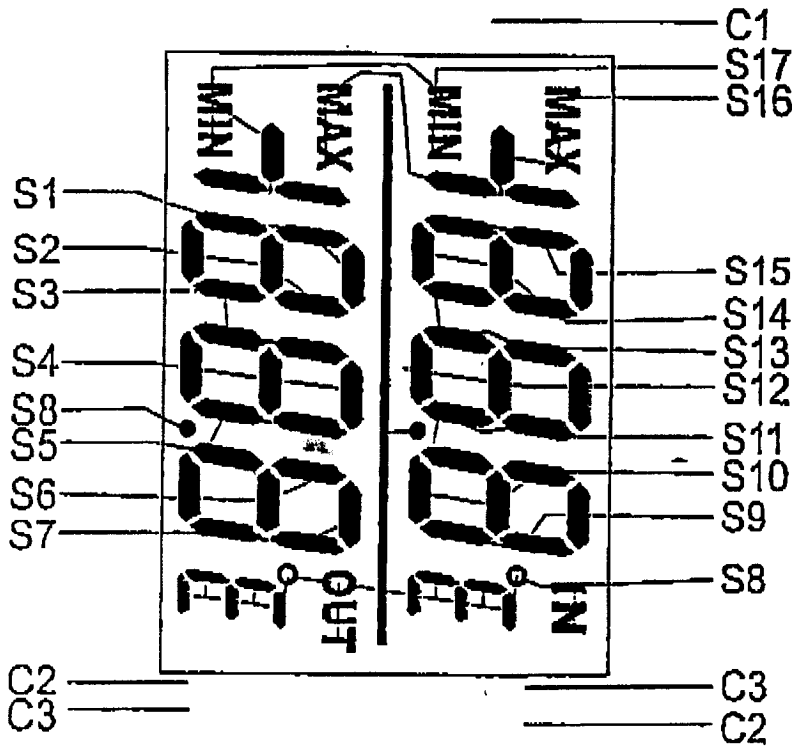
TURN ON ALERT

ALE
ON

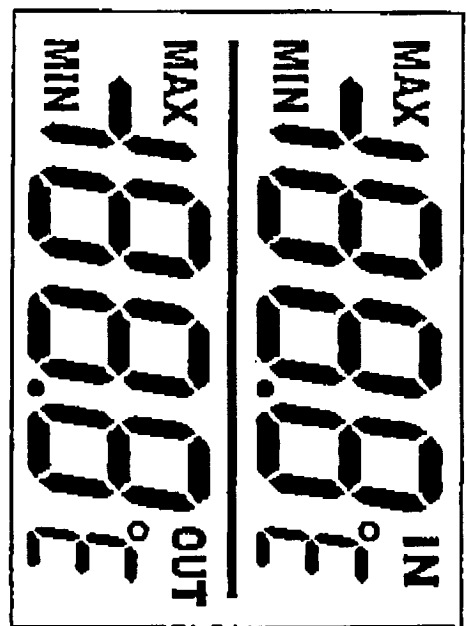
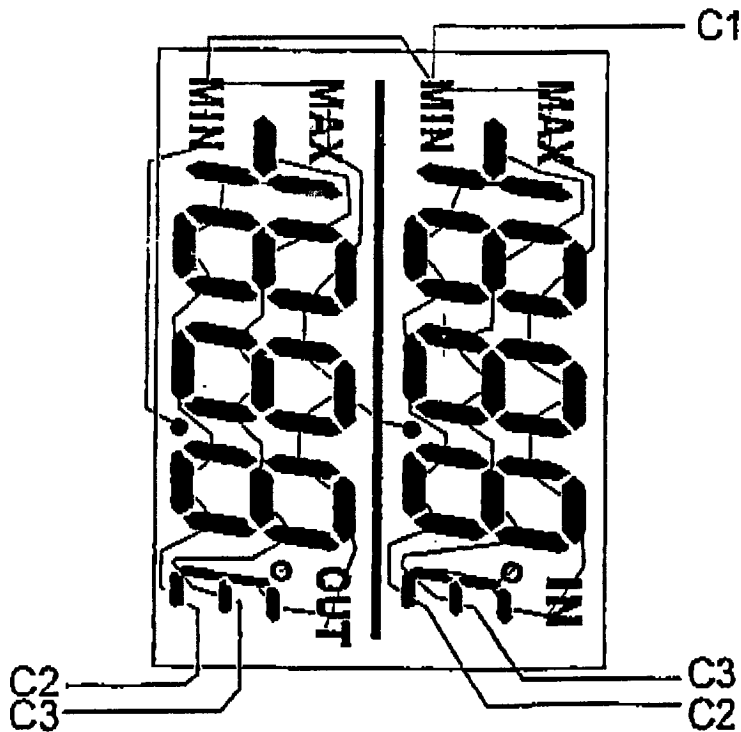
21.8C ^{IN}
24.0C ^{OUT}

Dual Display (In/Out) Thermometer

SS0111



VLCD : 3V
 1/3 DUTY, 1/2 BIAS
 VIEW ANGLE : 120°CLOCK



Dual Display (In/Out) Thermometer

SS0111

NORMAL MODE

21.8C ^{IN}
24.0C ^{OUT}

C/F
ADJ

71.1F ^{IN}
75.2F ^{OUT}

C/F
ADJ

21.8C ^{IN}
24.0C ^{OUT}

MAX/MIN

MAX 24.2C ^{IN}
MAX 30.7C ^{OUT}

MAX/MIN

MIN 19.8C ^{IN}
MIN 20.1C ^{OUT}

MAX/MIN

21.8C ^{IN}
24.0C ^{OUT}

MAX/MIN

HOLDING 1 SECOND FOR RESET MAX AND MIN TO CURRENT TEMP.

21.8C ^{IN}
24.0C ^{OUT}

ALERT
SET

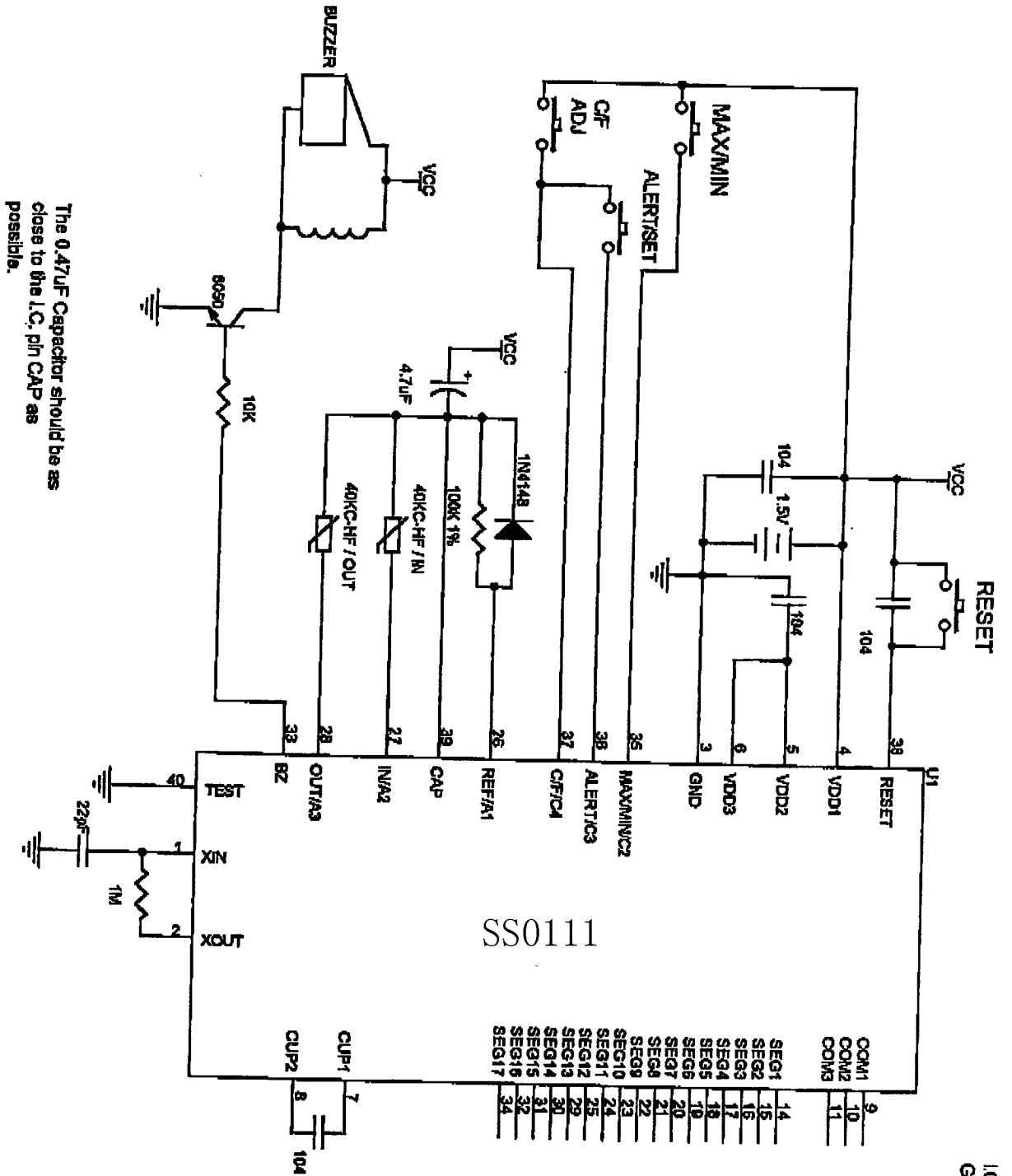
HOLDING 1 SECOND FOR SETTING ALERT TEMPERATURE RANGE

4.0C ^{IN}
-1.0C ^{OUT}

C/F
ADJ

ADDING ONE DEG C PRESS ONCE OR AUTO ADVANCED (-50 -- +70) WHEN HOLDING THE KEY

4.0C ^{IN}
0.0C ^{OUT}



The 0.47uF Capacitor should be as close to the I.C. pin CAP as possible.

I.C. SUBSTRATE IS CONNECTED TO GND

欢迎索取免费详细资料、设计选型指南和光盘、样品；产品繁多未能尽录，欢迎来电查询。

[中国传感器科技信息网：HTTP://WWW.SENSOR-IC.COM/](http://WWW.SENSOR-IC.COM/)

[工控安防网：HTTP://WWW.PC-PS.NET/](http://WWW.PC-PS.NET/)

[消费电子专用电路网：HTTP://WWW.SUNSTARE.COM/](http://WWW.SUNSTARE.COM/)

E-MAIL：xjr5@163.com szss20@163.com

MSN：suns8888@hotmail.com

QQ: 195847376

地址：深圳市福田区福华路福庆街鸿图大厦 1602 室

电话：0755-83376549 83376489 83387030 83387016

传真：0755-83376182 83338339 邮编：518033 手机：(0)13902971329

深圳展销部：深圳华强北路赛格电子市场 2583 号 TEL/FAX：
0755-83665529 25059422

北京分公司：北京海淀区知春路 132 号中发电子大厦 3097 号

TEL：010-81159046 82615020 13501189838 FAX：010-82613476

上海分公司：上海市北京东路 668 号上海赛格电子市场 2B35 号

TEL：021-28311762 56703037 13701955389 FAX：021-56703037

西安分公司：西安高新开发区 20 所(中国电子科技集团导航技术研究所)
西安劳动南路 88 号电子商城二楼 D23 号

TEL：029-81022619 13072977981 FAX:029-88789382

成都：TEL:(0)13717066236

技术支持：0755-83394033 13501568376