

LC复合EMI滤波器LFA10、LFA20、LFA30系列是采用将电介质和磁介质复合并一体化烧结而成的材料生产的高性能EMI滤波器。该产品具有超小型、薄型、无方向极性的特点，适合于高密度贴装。

■特点

- 采用诱导体和磁性体一体化的单片结构。
- 超小型、薄型。
- 急剧的插入损失特性。
- 适用于宽频带的降噪。
- 无方向极性，使用方便。

■用途

- 电视机、录像机、DVD等数字影像设备
- 传真机、调制解调器、ADSL终端等信息通信设备
- 复印机、个人电脑、游戏机等数字设备
- 其它各种电子设备的降噪方案

Our "LFA10, LFA20, LFA30" series chip type LC EMI filter is an extremely efficient EMI filter made of a combination of both dielectric and magnetic materials. They are well suited for elimination of noise on high frequency signal lines, due to their steep insertion loss characteristics.

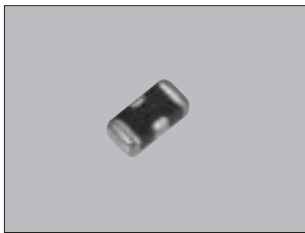
■Features

- Monolithic construction of dielectric and magnetic materials
- Ultra miniature and low profile type
- Steep insertion loss characteristics
- Removes noise over a wide range
- Easy to place since there is no polarity

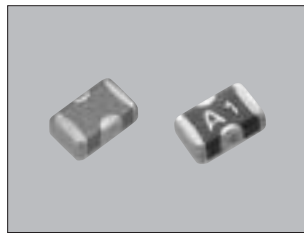
■Applications

- For digital AV equipment such as TV, VCR and DVD.
- For telecommunication equipment such as Fax, modem and ADSL.
- For computer equipment such as personal computers and copier.
- For noise countermeasure of other digital circuit equipment.

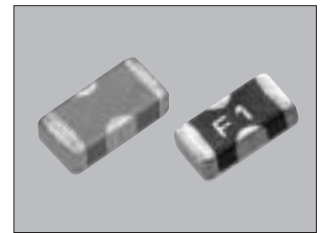
LFA10 series



LFA20 series



LFA30 series

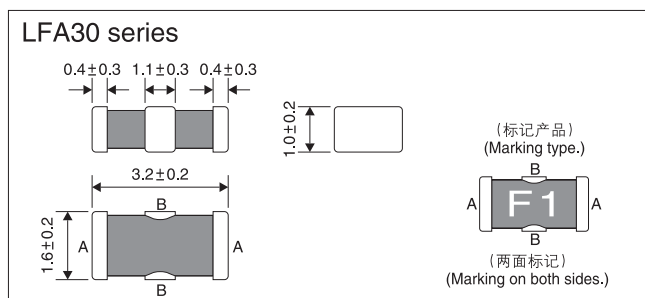
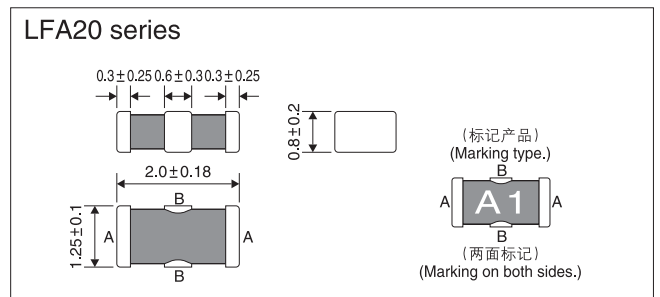
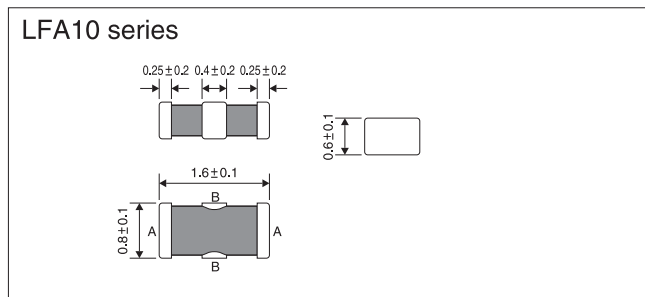


EMI FILTER

■型号构成 Part number system

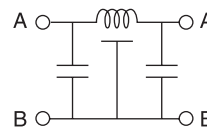
LFA	10	—	2A	1E	223	M	T	E
系列名 Series	形状 Size 10: 1.6×0.8mm 20: 2.0×1.25mm 30: 3.2×1.6mm (L) (W)		额定电流 Rated current 2A: 100mA	额定电压 Rated voltage 1E: 25V	断开频率 Cut-off frequency	断开频率 容许偏差 Cut-off frequency tolerance M: ±20%	包装形式 Packing form T: 带装 Taping B: 散装 Bulk	标记 Marking E: 有 with 空白: 无 Blank: without LFA10: 无 without

■形状·尺寸(mm) Dimensions (mm)

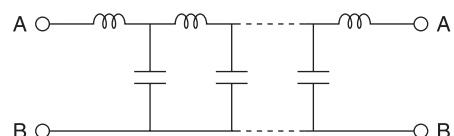


■等效电路 Equivalent circuits

LFA10 series



LFA20,30 series



型号一览表 Part number list

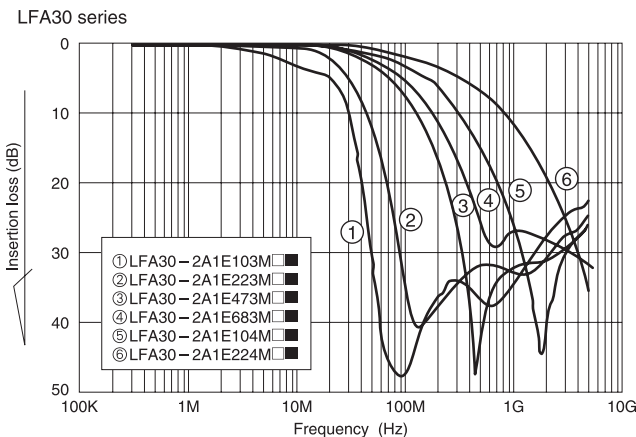
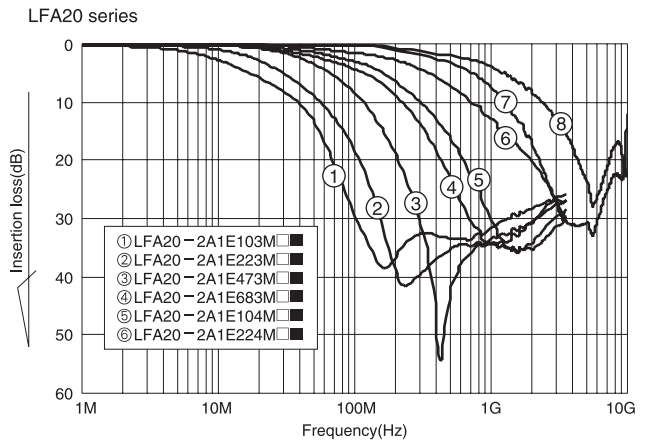
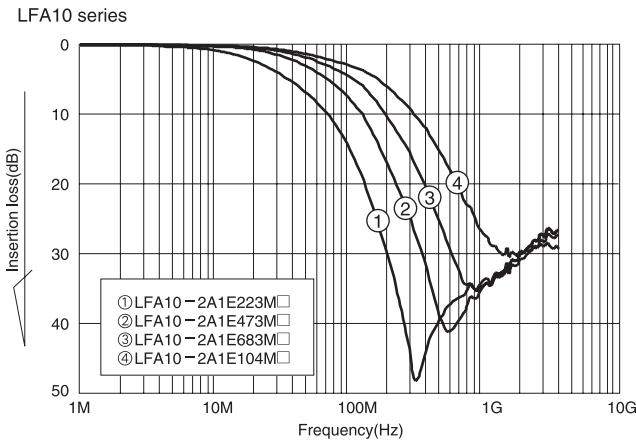
型号 Part number	断开频率 Cut-off frequency	标记记号 Marking	断开频率容许偏差 Cut-off frequency tolerance	额定电压 Rated voltage	额定电流 Rated current	绝缘阻抗 Insulation Resistance	使用温度范围 Operating Temp. range
LFA10 series			±20%	25V	100mA	10MΩmin.	-40°C~+85°C
LFA10-2A1E223M□	22MHz						
LFA10-2A1E473M□	47MHz						
LFA10-2A1E683M□	68MHz						
LFA10-2A1E104M□	100MHz						
LFA20 series							
LFA20-2A1E103M■	10MHz	A1					
LFA20-2A1E223M■	22MHz	A2					
LFA20-2A1E473M■	47MHz	A3					
LFA20-2A1E683M■	68MHz	A4					
LFA20-2A1E104M■	100MHz	A5					
LFA20-2A1E224M■	220MHz	A6					
LFA30 series							
LFA30-2A1E103M■	10MHz	F1					
LFA30-2A1E223M■	22MHz	F2					
LFA30-2A1E473M■	47MHz	F3					
LFA30-2A1E683M■	68MHz	F4					
LFA30-2A1E104M■	100MHz	F5					
LFA30-2A1E224M■	220MHz	F6					

□: T表示带装、B为散装
 □: "T" stands for taping package and "B" stands for bulk package.

■: E表示有标记、无记号表示无标记
 ■: "E" stands for marking type and " " stands for non-marking type.

EMI FILTER
EMI 滤波器

插入损失特性(参考) Insertion loss (Reference)



电路图 Test circuit

