



**ANWENDUNG**

- ◆ Schiffbau  
 ABS, BV, DNV, GL, KRS, LRS, RINA
- ◆ Motorenbau
- ◆ Schienenfahrzeuge
- ◆ Maschinenbau
- ◆ Hydraulik
- ◇ HLK
- ◇ Kältetechnik
- ◇ Prozess Techn.
- ◇ Wasseraufbereitung
- ◇ Autoindustrie
- ◇ Prüfstände
- ◇ Ex
- ◇ Lebensmittelindustrie
- ◇ Autoklaven

**APPLICATIONS**

- ◆ Construction navale  
 ABS, BV, DNV, GL, KRS, LRS, RINA
- ◆ Constr. de moteurs
- ◆ Véhicules sur rail
- ◆ Machines-outils
- ◆ Hydraulique
- ◇ CVC
- ◇ Réfrigération
- ◇ Techn. de procédés
- ◇ Traitement de l'eau
- ◇ Industrie automobile
- ◇ Banc d'essai à frein
- ◇ Ex
- ◇ Industrie alimentaire
- ◇ Autoclavage

**APPLICATIONS**

- ◆ Shipbuilding  
 ABS, BV, DNV, GL, KRS, LRS, RINA
- ◆ Engine manufacturing
- ◆ Railways
- ◆ Machine tools
- ◆ Hydraulics
- ◇ HVAC
- ◇ Refrigeration
- ◇ Process technology
- ◇ Water treatment
- ◇ Automotive industry
- ◇ Test benches
- ◇ Ex
- ◇ Food Industry
- ◇ Autoclaves



**HAUPTMERKMALE**

- ◆ Sensor: Dickschicht auf Keramik
- ◆ Messbereich: 0...1 bis 0...250 bar
- ◆ Ausgangssignal: 4...20 mA  
 0.5...4.5 VDC (ration.)
- ◆ NLH (BSL durch 0)  
 < 250 bar: ± 0.3 % d.S. typ.  
 250 bar: ± 0.5 % d.S. typ.

**CARACTÈRES DISTINCTIFS**

- ◆ Capteur: Film épais sur céramique
- ◆ Plage de mesure: 0...1 à 0...250 bar
- ◆ Signal de sortie: 4...20 mA  
 0.5...4.5 VDC (ration.)
- ◆ NLH (BSL par 0)  
 < 250 bar: ± 0.3 % E.M. typ.  
 250 bar: ± 0.5 % E.M. typ.

**MAIN CHARACTERISTICS**

- ◆ Sensor: Thick film on ceramic
- ◆ Measuring range: 0...1 to 0...250 bar
- ◆ Signal output: 4...20 mA  
 0.5...4.5 VDC (ration.)
- ◆ NLH (BSL through 0)  
 < 250 bar: ± 0.3 % FS typ.  
 250 bar: ± 0.5 % FS typ.

**VORTEILE**

- ◆ Hohe Vibrationsfestigkeit: 15g (20...2000 Hz)
- ◆ Resistent gegen aggressive Medien
- ◆ Gutes Preis-/ Leistungsverhältnis
- ◆ EMV Schutz, IEC 61000: inkl. Surge

**AVANTAGES PRINCIPAUX**

- ◆ Grande résistance aux vibrations 15g (20...2000 Hz)
- ◆ Résistant contre médias agressifs
- ◆ Excellent rapport performances
- ◆ Avec filtre CEM, CEI 61000: incl. Surge

**MAIN FEATURES**

- ◆ High resistance of vibration 15g (20...2000 Hz)
- ◆ Resistant to aggressive media
- ◆ Excellent cost-performance ratio
- ◆ Built-in filter EMC, IEC 61000: incl. Surge

**BESTELLINFORMATION / INFORMATION POUR LA COMMANDE / ORDERING INFORMATION**

| Varianten Code/ Numéro de variantes/ Custom build code           |  |                                |                     | XXXX                         | XX  | XXXX      | XX | XX         | XX...       |  |
|--|--|--------------------------------|---------------------|------------------------------|---|-----------|----|------------|-------------|--|
| (with inversed electrical connection: Pin 1 ⊕, Pin 2 ⊖)          |  |                                |                     | 8440                         |   |           |    |            |             |  |
|  |  |                                |                     | 8480                         |   |           |    |            |             |  |
| <b>Bereich</b>   | 0 ... 1.0  | <b>Überdruck</b>               | max. 4              | <b>Berstdruck</b>            | 5   | <b>71</b> |    |            |             |  |
| <b>Plage</b>   | 0 ... 1.6  | <b>Surpression</b>             | 4                   | <b>Pression d'éclatement</b> | 5   | <b>73</b> |    |            |             |  |
| <b>Range</b>   | 0 ... 2.5  | <b>Over pressure</b>           | 6                   | <b>Burst pressure</b>        | 7.5                                       | <b>75</b> |    |            |             |  |
|  | 0 ... 4.0  |                                | 10                  |                              | 12  | <b>76</b> |    |            |             |  |
| <b>[bar]</b>   | 0 ... 6.0  | <b>[bar]</b>                   | 15                  | <b>[bar]</b>                 | 18  | <b>77</b> |    |            |             |  |
|  | 0 ... 10.0   |                                | 25                  |                              | 30  | <b>78</b> |    |            |             |  |
|  | 0 ... 16.0   |                                | 40                  |                              | 48  | <b>79</b> |    |            |             |  |
|  | 0 ... 25.0   |                                | 60                  |                              | 75  | <b>80</b> |    |            |             |  |
|  | 0 ... 40.0   |                                | 80                  |                              | 120                                       | <b>81</b> |    |            |             |  |
|  | 0 ... 60.0   |                                | 120                 |                              | 180                                       | <b>82</b> |    |            |             |  |
|  | 0 ... 100.0  |                                | 200                 |                              | 300                                       | <b>83</b> |    |            |             |  |
|  | 0 ... 160.0  |                                | 320                 |                              | 480                                       | <b>85</b> |    |            |             |  |
|  | 0 ... 250.0  |                                | 500                 |                              | 750                                       | <b>74</b> |    |            |             |  |
| Absolut-Bereiche/ Plages absolue/ Absolute ranges ≤ 60 bar       |  |                                |                     |                              |   |           |    |            |             |  |
| Sonderbereich nach Kundenwunsch, z. B.:                          |  |                                |                     |                              |   |           |    |            |             |  |
| Plage à spécifier par le client, p. ex.: -1 ... +4 bar <b>XX</b> |  |                                |                     |                              |   |           |    |            |             |  |
| Customized ranges on request, e.g.:                              |  |                                |                     |                              |   |           |    |            |             |  |
| <b>Genauigkeitsband</b>  | Relativdruck bei Abgleichtemp. 25°C/ Pression relatif à temp. calibrage 25°C/                        |                                |                     |                              |   |           |    | <b>26</b>  |             |  |
| <b>Bande précision</b>   | Relative pressure on calibration temp. 25°C  |                                |                     |                              |   |           |    |            |             |  |
| <b>Accuracy band</b>   | Absolutdruck bei Abgleichtemp. 25°C/ Pression absolue à temp. calibrage 25°C/                        |                                |                     |                              |   |           |    | <b>46</b>  |             |  |
|  | Absolute pressure on calibration temp 25°C. (Bereich/ plage/ range 1.0...40 bar)                     |                                |                     |                              |   |           |    |            |             |  |
|  | Abgleichtemp. nach Kundenwunsch/ Temp. calibrage sur demande du client/                              |                                |                     |                              |   |           |    | <b>XX</b>  |             |  |
|  | Temp. calibrage ranges on request  |                                |                     |                              |   |           |    |            |             |  |
| <b>Druckanschluss</b>  | G 1/4" aussen/ mâle/ male (O-Ring)   |                                |                     |                              |   |           |    | <b>17</b>  |             |  |
| <b>Raccord de pression</b>                                       |  |                                |                     |                              |   |           |    |            |             |  |
| <b>Pressure connection</b>                                       |  |                                |                     |                              |   |           |    |            |             |  |
| <b>Ausführung</b>  | Gerätestecker/ Embase mâle/ Male electrical plug DIN43650-A (Mat.: PA)                               |                                |                     |                              |   |           |    | <b>04</b>  |             |  |
| <b>Exécution</b>   | Kabel abgeschirmt/ Câble avec écran/ Cable with shield **  |                                |                     |                              |   |           |    | <b>08</b>  |             |  |
| <b>Execution</b>   | 4x0.5mm <sup>2</sup> , l=1.5m, Radox 125   |                                |                     |                              |   |           |    |            |             |  |
|  | Gerätestecker/ Embase mâle/ Male electrical plug DIN72585 Code 1 (Mat.: PBT)                         |                                |                     |                              |   |           |    | <b>25</b>  |             |  |
| <b>Ausgangssignal</b>  | Output   | Load resistance                | I <sub>SUPPLY</sub> | U <sub>SUPPLY</sub>          |   |           |    |            | <b>79</b>   |  |
| <b>Signal de sortie</b>  | 4 ... 20 mA  | (U <sub>Supply</sub> -9V)/20mA |                     | 9 ...32 VDC                  |   |           |    |            |             |  |
| <b>Output</b>  | 0.5 ... 4.5V DC  | ≥5.0 kΩ                        | ≤10 mA              | 5 VDC ±0.25 VDC              | ratiometrisch/ ratiométrique/ ratiometric |           |    |            | <b>73</b>   |  |
| <b>Zubehör</b>   | Druckspitzendämpfung/ Élément d'amortissement à pointe de surpression/ Pressure peak damping element |                                |                     |                              |   |           |    |            |             |  |
| <b>Accessoires</b>   | Loch/ Trou/ Hole   |                                |                     |                              |   |           |    | ø1.0mm     | <b>40</b>   |  |
| <b>Accessories</b>   |  |                                |                     |                              |   |           |    | ø0.3mm     | <b>43</b>   |  |
|  |  |                                |                     |                              |   |           |    | ø0.5mm     | <b>45</b>   |  |
|  | Kabeldose/ fiche femelle/ female electrical connector  |                                |                     |                              |   |           |    | DIN43650-A | <b>58</b>   |  |
|  | ** L = Kabellänge in mm/ L = Longueur du câble en mm/ L = Cable length in mm                         |                                |                     |                              |   |           |    |            | <b>XXXX</b> |  |

**i** Trafag entwickelt und produziert auch speziell auf Ihre Bedürfnisse zugeschnittene Produkte. Bitte fragen Sie uns an.  
Trafag développe et fabrique des produits adaptés à vos besoins spécifiques en se basant sur votre cahier des charges. Contactez-nous s.v.p.  
Trafag develops and manufactures customer-engineered products according to your specifications to meet your requirements. Please contact us.

**SPEZIFIKATIONEN**

**HAUPTMERKMALE**

Sensor: Dickschicht auf Keramik (s. Material)  
Messbereich: 0...1 bis 0...250 bar  
Ausgangssignal: 4...20 mA  
0.5...4.5V DC (ration.)

**GENAUIGKEIT**

TFB @ -25...+85°C  
≤ 100 bar: <sup>1)</sup> ± 1.0 % d.S. typ.  
> 100 bar: <sup>2)</sup> ± 2.0 % d.S. typ.  
Genauigkeit @ +25°C  
≤ 100 bar: <sup>1)</sup> ± 0.5 % d.S. typ.  
> 100 bar: <sup>2)</sup> ± 0.7 % d.S. typ.  
NLH @ +25°C (BSL durch 0)  
≤ 100 bar: ± 0.3 % d.S. typ.  
> 100 bar: ± 0.5 % d.S. typ.  
TK Nullpunkt und Spanne: ± 0.01 % d.S./K typ.  
Langzeitstabilität  
1 Jahr @ +25°C: ± 0.3 % d.S. typ.

**ELEKTRISCHE DATEN**

Ausgangssignal/ Speisespannung  
4...20 mA: 24 (9...32) VDC  
0.5...4.5 VDC: 5VDC ± 0.25VDC ratiometrisch  
Anstiegszeit: typ. 1 ms/ 10...90%  
Nenndruck

**UMGEBUNGSBEDINGUNGEN**

Betriebstemperatur: -25...+85°C  
Medientemperatur: -25...+85°C  
Schutzart: <sup>3)</sup> min. IP65  
Feuchtigkeit: max. 95% relativ  
Vibration: 15g (20...2000 Hz)  
Schock: 50g/ 11 ms

**EMV-SCHUTZ**

(Ausgang: 4...20mA)

Emission: EN/IEC 61000-6-3  
Immunität: EN/IEC 61000-6-2

**MECHANISCHE DATEN**

Material  
Sensor: Keramik, Al<sub>2</sub>O<sub>3</sub>(96%)  
Druckanschluss: 1.4435/1.4404 (AISI316L)  
Gehäuse: 1.4301 (AISI304)  
O-Ring (medienberührend): FKM 70°Sh  
Gerätestecker: siehe Bestellinformation  
Anziehdrehmoment: 25 Nm  
Gewicht: ~ 85...110 g

**SPECIFICATIONS**

**CARACTÈRES DISTINCTIFS**

Capteur: Film épais sur céramique (voir matière)  
Plage de mesure: 0...1 à 0...250 bar  
Signal de sortie: 4...20 mA  
0.5...4.5 VDC (ration.)

**PRÉCISION**

TEB @ -25...+85°C  
≤ 100 bar: <sup>1)</sup> ± 1.0 % E.M. typ.  
> 100 bar: <sup>2)</sup> ± 2.0 % E.M. typ.  
Précision @ +25°C  
≤ 100 bar: <sup>1)</sup> ± 0.5 % E.M. typ.  
> 100 bar: <sup>2)</sup> ± 0.7 % E.M. typ.  
NLH @ +25°C (BSL par 0)  
≤ 100 bar: ± 0.3 % E.M. typ.  
> 100 bar: ± 0.5 % E.M. typ.  
CT point zéro et écart: ± 0.01 % E.M./K typ.  
Stabilité à long terme  
1 année @ +25°C: ± 0.3 % E.M. typ.

**SPECIFICATIONS ÉLECTRIQUES**

Signal de sortie/ Tension d'alimentation  
4...20 mA: 24 (9...32) VDC  
0.5...4.5 VDC: 5VDC ± 0.25VDC ratiométrique  
Sensibilité de réponse: typ. 1 ms/ 10...90%  
pression nominale

**CONDITIONS D'ENVIRONNEMENT**

Température de service: -25...+85°C  
Température de médias: -25...+85°C  
Protection: <sup>3)</sup> min. IP65  
Humidité: 95% max. relatif  
Vibration: 15g (20...2000 Hz)  
Choc: 50g/ 11 ms

**CEM PROTECTION**

(Signal de sortie: 4...20mA)

Emission: EN/CEI 61000-6-3  
Immunité: EN/CEI 61000-6-2

**SPECIFICATIONS MÉCANIQUES**

Matière  
Capteur: Céramique, Al<sub>2</sub>O<sub>3</sub>(96%)  
Raccord de pression: 1.4435/1.4404 (AISI316L)  
Boîtier: 1.4301 (AISI304)  
O-Ring (contact. de médias): FKM 70°Sh  
Embase mâle: voir information pour la commande  
Couple de serrage: 25 Nm  
Poids: ~ 85...110 g

**SPECIFICATIONS**

**MAIN CHARACTERISTICS**

Sensor: Thick film on ceramic (see material)  
Measuring range: 0...1 to 0...250 bar  
Signal output: 4...20 mA  
0.5...4.5 VDC (ration.)

**ACCURACY**

TEB @ -25...+85°C  
≤ 100 bar: <sup>1)</sup> ± 1.0 % FS typ.  
> 100 bar: <sup>2)</sup> ± 2.0 % FS typ.  
Accuracy @ +25°C  
≤ 100 bar: <sup>1)</sup> ± 0.5 % FS typ.  
> 100 bar: <sup>2)</sup> ± 0.7 % FS typ.  
NLH @ +25°C (BSL through 0)  
≤ 100 bar: ± 0.3 % FS typ.  
> 100 bar: ± 0.5 % FS typ.  
TC zero point and span: ± 0.01 % FS/K typ.  
Long term stability  
1 year @ +25°C: ± 0.3 % FS typ.

**ELECTRICAL DATA**

Output/Supply voltage  
4...20 mA: 24 (9...32) VDC  
0.5...4.5 VDC: 5VDC ± 0.25VDC ratiometric  
Rise time: typ. 1 ms/ 10...90%  
nominal pressure

**ENVIRONMENTAL CONDITIONS**

Operating temperature: -25...+85°C  
Media temperature: -25...+85°C  
Protection: <sup>3)</sup> min. IP65  
Humidity: max. 95% relative  
Vibration: 15g (20...2000 Hz)  
Shock: 50g/ 11 ms

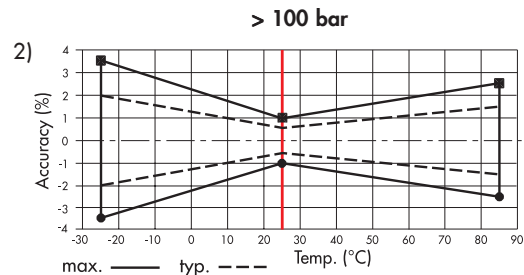
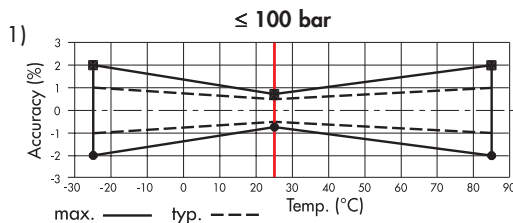
**EMC PROTECTION**

(Output: 4...20mA)

Emission: EN/IEC 61000-6-3  
Immunity: EN/IEC 61000-6-2

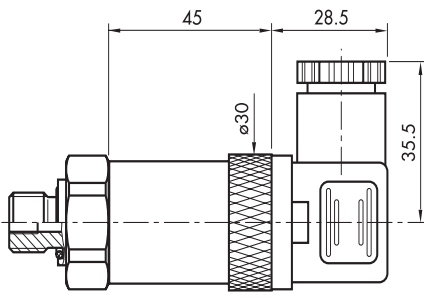
**MECHANICAL DATA**

Material  
Sensor: Ceramic, Al<sub>2</sub>O<sub>3</sub>(96%)  
Pres sure connection: 1.4435/1.4404 (AISI316L)  
Housing: 1.4301 (AISI304)  
O-Ring (media contacting): FKM 70°Sh  
Male electrical plug: See ordering information  
Mounting torque: 25 Nm  
Weight: ~ 85...110 g

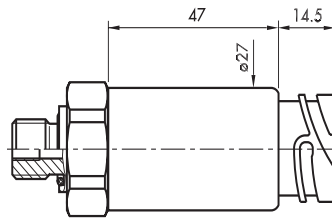


<sup>3)</sup> nur mit vorschriftsmässig montierter Kabeldose gültig/ valable seulement avec fiche femelle montée selon instructions/ provided female connector is mounted according to instructions

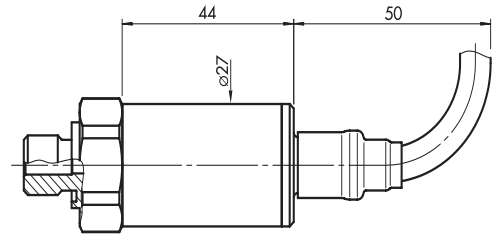
**MASSBILDER / COTES D'ENCOMBREMENT / DIMENSIONS**



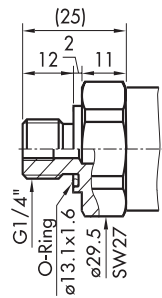
**84XX.XX.XXXX.04.XX.XX**



**84XX.XX.XXXX.25.XX.XX**



**84XX.XX.XXXX.08.XX.XX**



**XXXX.XX.XX17.XX.XX**

**ELEKTRISCHER ANSCHLUSS / RACCORDEMENT ÉLECTRIQUE / ELECTRICAL CONNECTION**

| Schutzart / Protection <sup>3)</sup>                    | IP65 <sup>3)</sup>        | IP68 <sup>3)</sup>                | IP69K <sup>3)</sup>  |
|---|---------------------------|-----------------------------------|--|
| Tauchtiefe<br>Profondeur d'immersion<br>Immersion depth | -                         | 1.5m                              | -  |
| Ausführung<br>Exécution<br>Execution                    | DIN 43650-A<br><b>04</b>  | Cable<br><b>08</b>                | DIN 72585<br>Code 1<br><b>25</b>                               |
| Ausgangssignal<br>Signal de sortie<br>Output            |                           | Abschirmung<br>écran / shield<br> |  |
|   | 8440<br>2<br>1<br>1<br>⊕  | 8480<br>1<br>2<br>⊕               | blue: not conn.<br>brown<br>1<br>4<br>3                        |
|   | 8440.XX.XXXX.XX <b>73</b> | 1<br>2<br>3<br>⊕                  | brown<br>blue<br>black<br>yellow/<br>green<br>1<br>2<br>4<br>3 |

<sup>3)</sup> nur mit vorschriftsmässig montierter Kabeldose gültig  
valable seulement avec fiche femelle montée selon instructions  
provided with female connector is mounted according to instructions