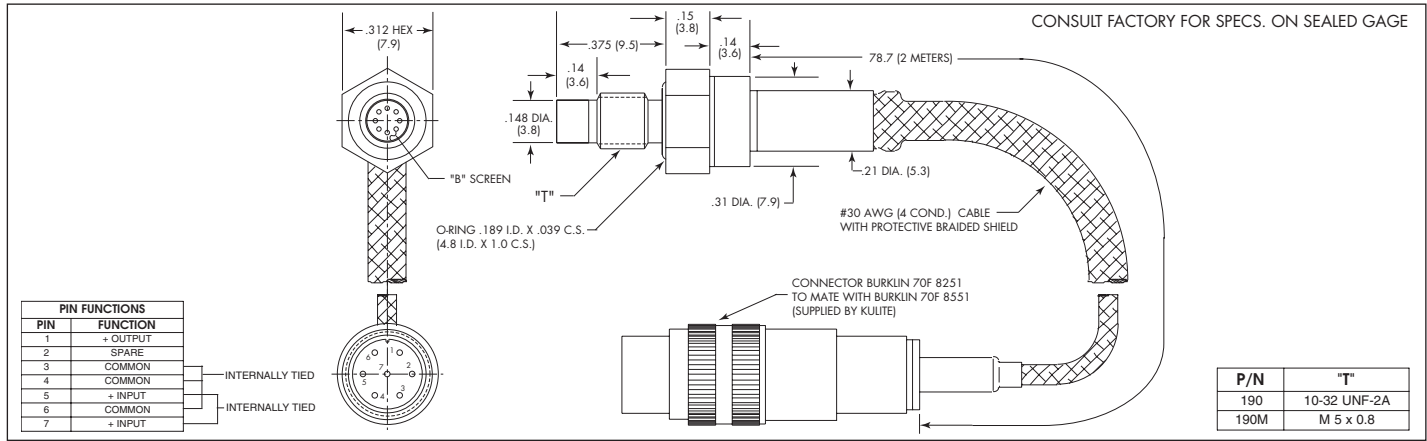




**MINIATURE AUTOMOTIVE 5VDC OUTPUT IS® PRESSURE TRANSDUCER**  
**INLET PRESSURE TRANSDUCER**  
**FUEL INJECTOR PRESSURE TRANSDUCER**

**ETL-173-190 (M) SERIES**

- High Bandwidth With Integrated Amplifier
- Excellent Long Term Stability Coupled With High Accuracy
- Patented Leadless Technology VIS®
- Robust Construction
- Both Dynamic and Static Output Capabilities Available



<b>INPUT</b>	1.7	3.5	7	17	35	70	170	250 BAR
Pressure Range	25	50	100	250	500	1000	2500	3600 PSI
Operational Mode	Absolute, Sealed Gage							
Over Pressure	2 Times Rated Pressure to 1000 PSI (70 BAR) 1.5 Times Rated Pressure Above 1000 PSI to a Max. of 6000 PSI (420 BAR)							
Burst Pressure	3 Times Rated Pressure to a Max. of 6000 PSI (420 BAR)							
Pressure Media	All Nonconductive, Noncorrosive Liquids or Gases (Most Conductive Liquids and Gases - Please Consult Factory)							
Maximum Electrical Current	28 mA							
Rated Electrical Excitation	12 ± 4 VDC				28 ± 4 VDC			
<b>OUTPUT</b>								
Full Scale Reading	5 V ± 150mV				10 V ± 300mV			
Output Impedance	200 Ohms (Typ.)							
Bandwidth (-3dB)	Greater Than 30 KHz							
Residual Unbalance	500 mV ± 100 mV							
Combined Non-Linearity, Hysteresis and Repeatability	± 0.1% FSO BFSL (Typ.) ± 0.5% FSO (Max.)							
Resolution	Infinitesimal							
Natural Frequency (KHz) (Typ.)	240	300	380	550	700	1000	1500	2000
Insulation Resistance	100 Megohm Min. @ 50 VDC							
Response Time	<1 MilliSec							
<b>ENVIRONMENTAL</b>								
Operating Temperature Range	32°F to +392°F (0°C to +200°C) (Front End) -4°F to +185°F (-20°C to +85°C) (Connector + Amplifier)							
Compensated Temperature Range	+68°F to +250°F (+20°C to +120°C)							
Thermal Zero Shift	± 2% FS/100°C (Typ.)							
Thermal Sensitivity Shift	± 2% /100°C (Typ.)							
Linear Vibration	50g Peak, Sine 10 to 2000 Hz							
Humidity	100% Relative Humidity							
Mechanical Shock	100g half Sine Wave 11 msec. Duation							
<b>PHYSICAL</b>								
Electrical Connection	Burklin 70F 8251 Connector (Mating Connector Supplied)							
Weight	10 Grams (Nom.) Excluding Cable and Connector							
Pressure Sensing Principle	Fully Active Four Arm Wheatstone Bridge Dielectrically Isolated Silicon on Silicon Patented Leadless Technology							
Mounting Torque	15 Inch-Pounds (Max.)							

Note: Custom pressure ranges, accuracies and mechanical configurations available. Dimensions are in inches. Dimensions in parenthesis are in millimeters.

Continuous development of new products and services. <http://www.sensor-ic.com/> TEL:0755-83376489 FAX:0755-83376182 E-MAIL: szss20@163.com

KULITE SEMICONDUCTOR PRODUCTS, INC. • One Willow Tree Road • Leonia, New Jersey 07605 • Tel: 201 461-0900 • Fax: 201 461-0990 • <http://www.kulite.com>