



PT460E Series



Features

- Accuracy better than $\pm 0.5\%$
- Dymax[®] coated stainless steel wetted parts
- Proven sensor design
- 0 - 500 to 0 -30,000 psi
- Internal 80% shunt calibration

Benefits

- Reliable, repeatable pressure measurements
- Superior abrasion resistance
- Good stability and repeatability
- Wide variety of pressure ranges
- Easy to calibrate with local indicator

Description

The PT460E Series transducer is a $\pm 0.5\%$ sensor ideal for melt pressure applications requiring simple installation, repeatability and reliability. The PT460E transducers provide the industry standard 3.33 mV/V signal designed to work with most pressure indicators. The PT460E comes equipped with a six pin bendix connector. Optional thermocouple or RTD configurations are available to provide melt temperature. The PT460E features a 1/2-20 UNF thread for installation in standard transducer mounting holes and can be supplied with a variety of other electrical connections if desired.

Specifications

PERFORMANCE CHARACTERISTICS

Output: 3.33 mV/V $\pm 2.0\%$

Input Voltage: 10 Vdc recommended, 12 Vdc maximum

Combined Error: $\pm 0.5\%$ FSO,
(Including Linearity, Repeatability & Hysteresis)

Repeatability: $\pm 0.2\%$ FSO

Configuration: Four-arm bonded foil Wheatstone bridge strain gage

Bridge Resistance: Input: 345 Ohms minimum

Output: 350 Ohms $\pm 10\%$

Over Pressure: 2 X FSO or 35,000 psi whichever is less

Zero Balance: $\pm 10\%$ FSO

Internal Shunt Calibration (R-Cal): 80% FSO $\pm 1\%$

Insulation Resistance: 1000 megohms @ 50 Vdc

TEMPERATURE & MECHANICAL CHARACTERISTICS

Max Diaphragm Temperature: 750°F (400°C)

Zero Shift (due to temperature change):

25 psi/100°F Typical (45 psi/100°C)

Electronics Operating Temperature: 250°F (121°C)

Zero Shift Due to Temperature Change:

$\pm 0.05\%$ FS/°F max ($\pm 0.10\%$ FS/°C max)

Sensitivity Shift Due to Temperature Change:

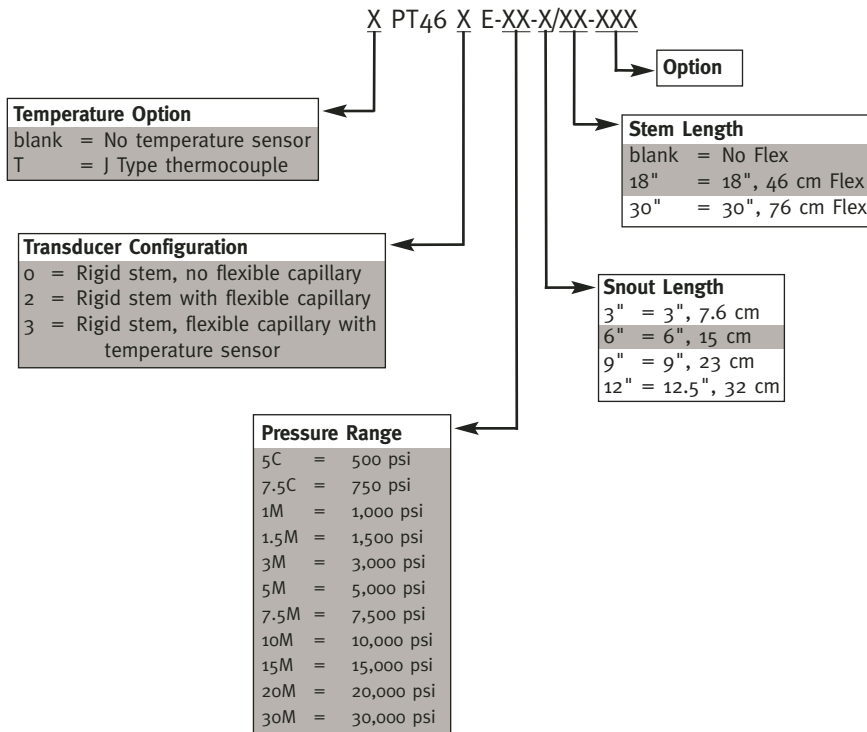
$\pm 0.02\%$ FS/°F max ($\pm 0.04\%$ FS/°C max)

Mounting Torque: 500 inch/lbs. maximum

Standard Wetted Parts: Dymax[®] coated 15-5 PH SST



Ordering Guide



Standard mating connector Dynisco P/N 711600 or 6-pin mating connector cable assembly.

Shaded sections refer to standard configurations. Accuracy may be affected if non-standard configurations are used. For additional options please consult factory.

Dynisco LLC
38 Forge Parkway
Franklin, MA 02038 (USA)

Phone +1 508 541 9400
Fax +1 508 541 6206
Email infoinst@dynisco.com

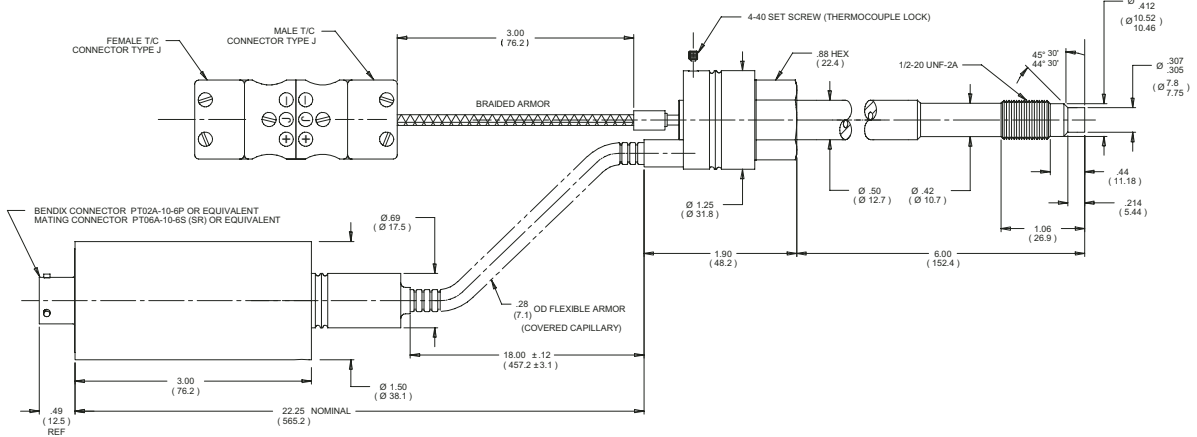
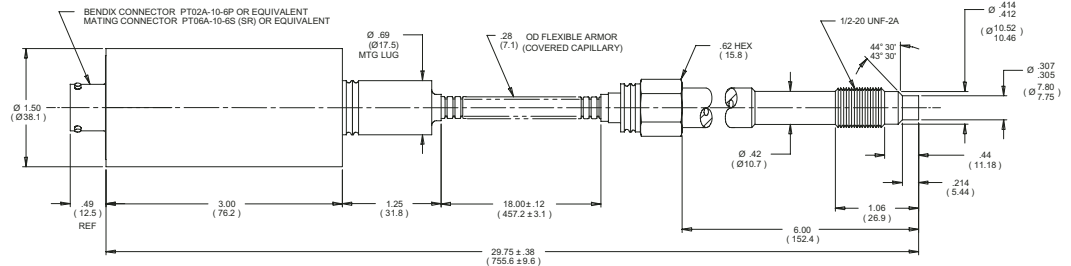
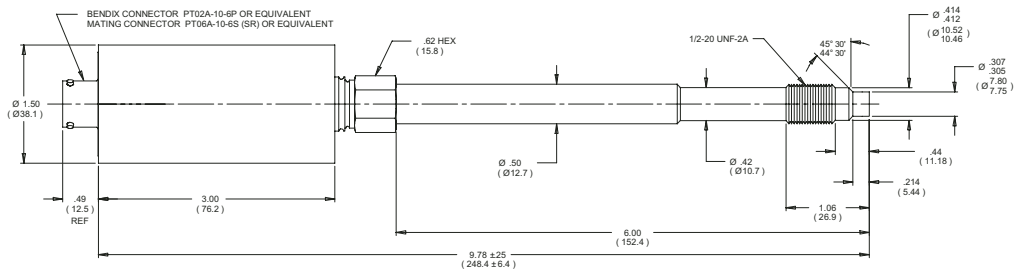
Hotline 1-800-Dynisco

www.dynisco.com



CONNECTOR WIRING	
PIN	FUNCTION
A	SIGNAL +
B	SIGNAL -
C	EXCITATION +
D	EXCITATION -
E	INTERNAL CAL RESISTOR
F	INTERNAL CAL RESISTOR

NOTES
1. DIMENSIONS ARE IN INCHES (MILLIMETERS)



All dimensions are inches (mm).