

## HPI6FER4

KODENSHI KOREA CORP

### 1. Description

The HPI6FER4 is a high-output, high speed silicon photodiode mounted in a side-viewing plastic package with visible light cut-off filter. This photodiode is both compact and easy to mount.

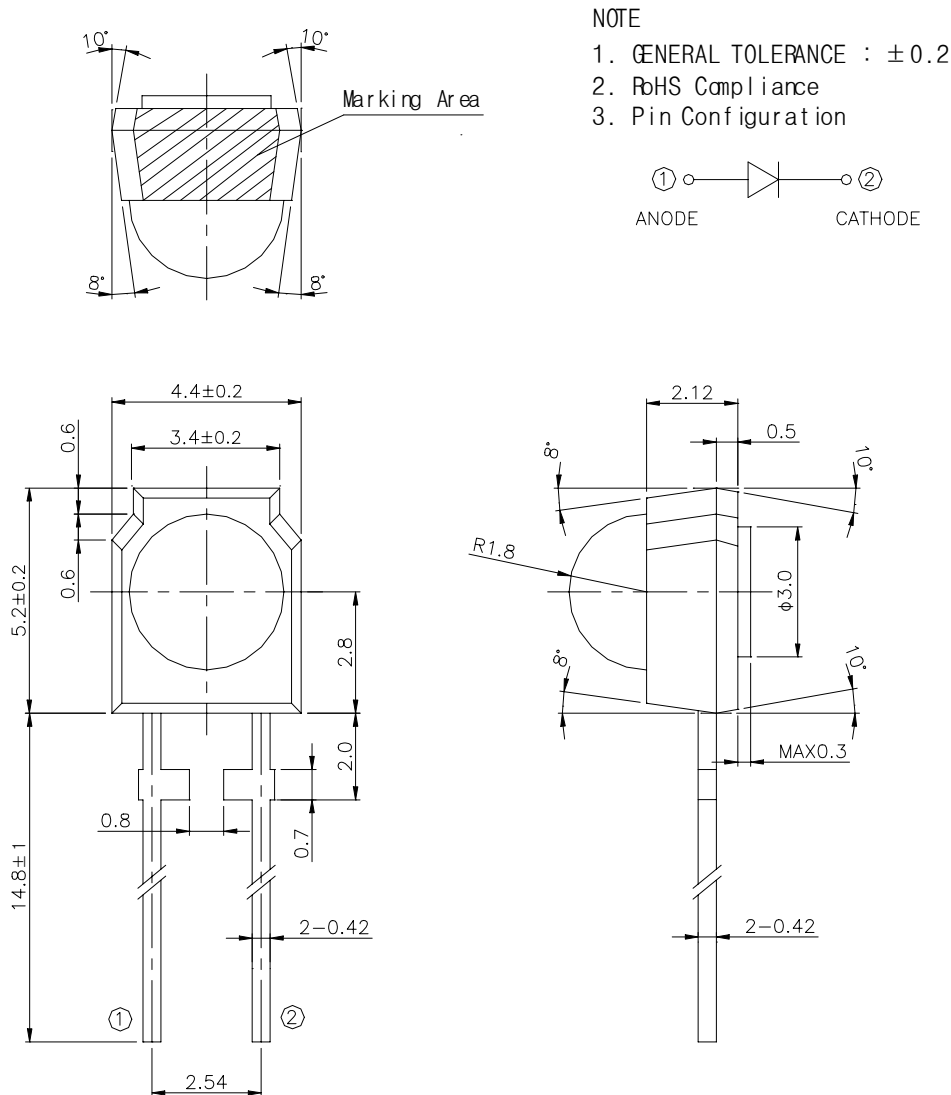
### 2. Features

- ◆ Compact Visible ray cut off mold type
- ◆ High speed response

### 3. Applications

- ◆ Optical transmission
- ◆ Optical receiver modules

### 4. Package Outline



**HPI6FER4****KODENSHI KOREA CORP****5. Absolute Maximum Ratings**[T<sub>A</sub> = 25°C]

Parameter	Symbol	Ratings	Unit
Reverse Voltage	V <sub>R</sub>	35	V
Power Dissipation	P <sub>D</sub>	150	mW
Operating Temp.	Topr	-30 ~ +70	°C
Storage Temp.	Tstg	-40 ~ +80	°C
Soldering Temperature (see Note 1)	Tsol.	260	°C

Notes : 1. For MAX. 5 seconds at the position of 3 mm from the package.

**6. Electro-optical Characteristics**[T<sub>A</sub> = 25°C]

Item	Symbol	Conditions	Min	Typ	Max	Unit
Open circuit voltage	V <sub>OC</sub>	E <sub>v</sub> =1,000lx <sup>*2</sup>	-	0.38		V
Short circuit current	I <sub>sc</sub>		-	26	-	μA
Curve factor	C.F		0.55	-	-	-
Dark current	I <sub>d</sub>	V <sub>R</sub> =10V	-	-	10	nA
Capacitance	C <sub>t</sub>	V=0V, f=1MHz	-	48	-	pF
Temperature coefficient of Voc	α <sub>t</sub>		-	-2.2	-	mV/C
Temperature coefficient of I <sub>sc</sub>	β <sub>t</sub>		-	0.18	-	%/C
Spectral sensitivity	λ		880 ~ 1,050			nm
Peak wavelength	λ <sub>p</sub>		-	1000	-	nm
Half Angle	Δθ		-	±45	-	deg.

Notes : \*2. E<sub>e</sub>: Irradiance by CIE standard light source A (2850K tungsten lamp)**7. Inspection Criteria**

7-1. In electrical and optical characteristics, all products are inspected for following 2 items.

Open circuit voltage : Voc

Short circuit current : I<sub>sc</sub>Dark Current : I<sub>d</sub>

7-2. No particular inspections shall be carried out for items other than those above. However they shall satisfy the ratings.

**8. Cautions in Usage**

8-1. Store and use where there is no exterior force that will cause change in shape.

8-2. Store and use where there is no Hydrogen Sulfide gas, or any other corrosive gas.

8-3. The bending or cutting of the lead should be done at room temperature, no force being applied on the package.

8-4. Solder the lead pin under conditions of the absolute maximum rating chart and do not apply force on the lead pin after soldering.

## **9. Guarantee Period and Scope**

### 9-1. Period

One year after delivery to the desired place.

### 9-2. Scope

Replacement of products will be done if any problems lie in our company's products.

However, we are not liable for your damage due to lack of caution.

## **10. Others**

Any doubts concerning this specification should be discussed fully by both parties.